

# FOR SALE

**UNIT 2, 20-26 HENRIETTA STREET  
WEXFORD  
AMV: €135,000**

**Kehoe  
& ASSOC.**

AUCTIONEERS & VALUERS

**FILE NO. D693.CWM**



- ❖ This is an ideal opportunity to acquire an excellent investment in Wexford
- ❖ Situated at on Henrietta Street, between South Main Street and Crescent Quay with well-established adjoining occupiers.
- ❖ An excellent retail unit on the ground floor extending to c. 54 sq. m.
- ❖ For further detail and to arrange a suitable viewing time, contact agents, Kehoe & Assoc. on 053 9144393.



**Kehoe & Assoc.**

Commercial Quay, Wexford.

Tel: 053 9144393

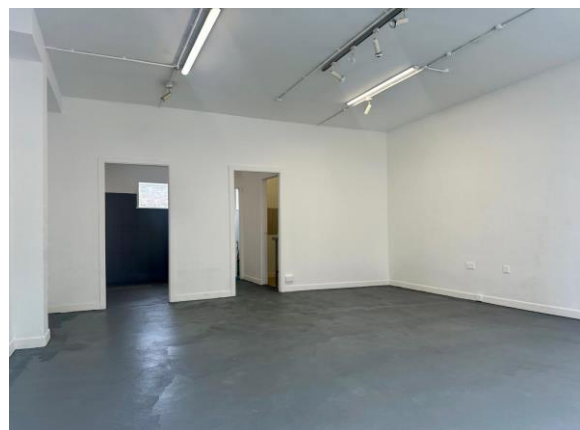
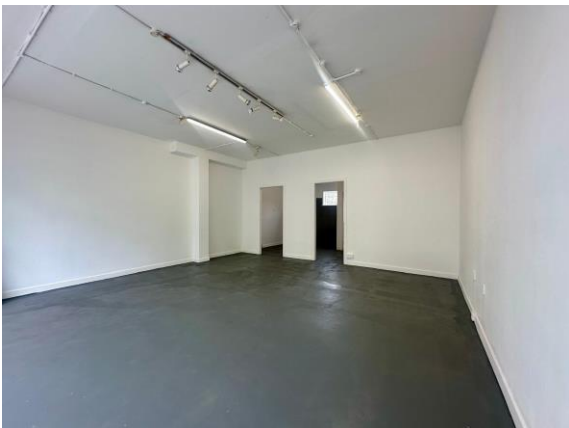
Email: [info@kehoeproperty.com](mailto:info@kehoeproperty.com).

Website: [kehoeproperty.com](http://kehoeproperty.com)

## DESCRIPTION

This retail ground floor premises provides a unique opportunity to acquire a turnkey property ahead of the upcoming busy summer and Fleadh Cheoil. The premises comprises of a generous 5mtr wide shop window front and the total floor area expands to c. 54 square meters.

Henrietta Street is a small street that connects Wexford's South Main Street with Crescent Quay. The street is also connected to nearby Cinema Lane via a small archway. Adjacent businesses include Kareplus Centre, Wexford Orthodontics, Alterations service, Rapid Lock Smiths, Hore's Department Store, an upcycle interior design store, a foot clinic and a cafe. The premises is steps away from the popular Wexford Quay promenade along the River Slaney Estuary. Wexford Town is a bustling commercial town with a fine mix of national, multi-national and indigenous retailers.



ACCOMMODATION		
Retail Unit	5.66 m x 5.99m	5 metre wide shop window. Concrete flooring throughout. Double door access leading through to:
Rear Storage Area	3.29 m (max) x 3.44m (max)	
Kitchen/Canteen Area	2.12 m x 2.08 m	Lino flooring.
Storage Room	1.46 m x 1.28 m	Lino flooring. Door leading through to.
W.C	1.52 m x 1.50 m	Lino flooring, w.h.b., w.c. and window.
<b>Gross Internal Floor Area (GIF): c. 54 sq. m /581 sq. ft.</b>		



**SERVICES:** Mains Water, Mains Electricity, Mains Drainage, Fibre Broadband available.

**LOCAL AUTHORITY RATE:** The 2024 Local Authority Rates are quoted at €3,233.79.

**MANAGEMENT FEE:** The Annual Management fee is €383 per annum.

**EIRCODE:** Y35 EF8P

**Building Energy Rating (BER): G BER No. 800998544**  
**Performance Indicator: 2176.16 kWh/m<sup>2</sup>/yr**

**VIEWING:** Strictly by prior appointment with the agents.  
Contact Kehoe & Assoc. at 053 9144393 to arrange an appointment

**Sales Agent**  
**CATRIONA MURPHY**  
**087 2427525**

**Email: [catriona@kehoeproperty.com](mailto:catriona@kehoeproperty.com)**

**Kehoe & Assoc.,**  
Commercial Quay,  
Wexford  
053 9144393  
[www.kehoeproperty.com](http://www.kehoeproperty.com)  
Email: [sales@kehoeproperty.com](mailto:sales@kehoeproperty.com)



These particulars are issued for guidance purposes only and do not form part of any Contract and are issued on the understanding that all negotiations regarding this property will be conducted through this firm. PRSA No. 002141

