

FOR SALE

AMV: €450,000

File No. D705.CWM



Idlewild, Garraun, Blackwater, Co. Wexford

- B3 Energy rated residence less than 3km from the coastline between two superb coastal villages of Blackwater & Kilmuckridge.
- Charming countryside living in a spacious family home built in 2003.
- Detached dormer residence offering a generous c. 2,800 sq. ft. of living space, 5 bedrooms and 4 bathrooms.
- Accommodation comprises of entrance hall, shower room, sitting room open fire, home office, bedroom on the ground floor, large kitchen no fitted units, sunroom, tv room, utility. Upstairs: Bedroom 1 with ensuite, bedroom 2 with slide robe, hot press and family bathroom, bedroom 3, bedroom 4 master with slide robe and ensuite.
- Ready for immediate occupancy, it provides the perfect canvas for creating your ideal family home. Don't miss the opportunity to make this exceptional property your own.
- To arrange a suitable viewing time, contact the sole selling agents only, Kehoe & Assoc. at 053 9144393



**Kehoe
& ASSOC.**

Idlewild, Garraun, Blackwater, Co. Wexford

Experience the tranquillity of countryside living in this inviting family home, built in 2003. Nestled in a serene setting, this detached dormer residence offers a generous c. 2,800 sq. ft. of living space, comprising 5 bedrooms and 4 bathrooms, making it ideal for a growing family.

Located less than 3km from the stunning coastline, this residence enjoys a prime position between the charming coastal villages of Blackwater and Kilmuckridge. Situated in a serene and picturesque area, residents can easily access the beautiful sandy beaches and scenic coastal walks that characterise this sought-after region. Whether exploring vibrant village life, enjoying water sports, or simply relaxing by the seaside, this location offers the perfect blend of coastal tranquillity and village charm.

Step into the welcoming entrance hall that leads to a convenient shower room, especially when arriving from the nearby beaches, and a spacious family sitting room with an open fire, perfect for relaxed conversational interiors. A versatile home office provides a quiet space for work or study, while bedroom 5 on this level can easily serve as a playroom or games room. The large kitchen awaits your personal touch, ready to be fitted with units that suit your style. Flooded with natural light, the sunroom offers a lovely spot to unwind, complemented by a dedicated TV room for family entertainment or indeed separate dining room and a utility room with access to the rear garden for added convenience.

Upstairs, the master bedroom features an ensuite and slide robes, offering ample storage and a touch of luxury. A hot press provides essential storage. Bedroom 2 also includes slide robes, bedroom 3 is generously proportioned and bedroom 4, another ensuite room, completes the upper level, ensuring comfort and privacy for all family members.

Externally, the property is equipped with a private well ensuring a reliable water supply, a treatment plant system for efficient waste management, and a 50 kWh wood pellet burner housed in a dedicated storage building with ample space for pellet storage. Fibre broadband is available for high-speed internet access. The outdoor features are equally impressive, with beautifully landscaped gardens featuring granite stone accents. The expansive site extends to approximately 0.86 acres and includes several additional buildings: a gym/home office measuring 35.3 sq.m., a home for your motor home or boat in the large shed (12m x 5.9m, approximately 71 sq.m.) with a concrete insulated floor and Stanley stove, and a poly tunnel for gardening enthusiasts.

This countryside retreat offers a perfect blend of spacious, comfortable living and modern amenities, set in a peaceful environment. Ready for immediate occupancy, it provides the perfect canvas for creating your ideal family home. Don't miss the opportunity to make this exceptional property your own.



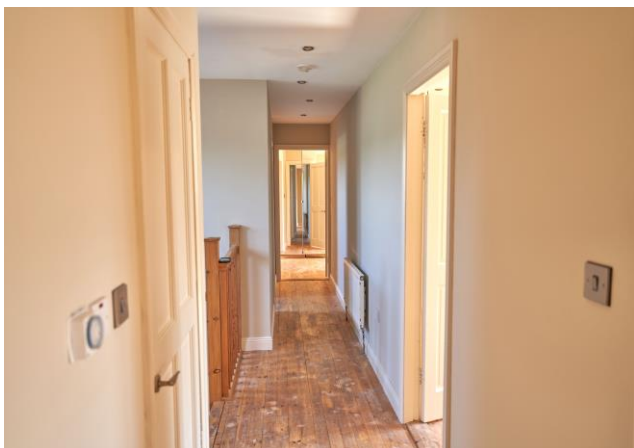
ACCOMMODATION

Entrance Hallway	8.78m x 1.92m	Solid timber flooring. Timber staircase to First Floor.
Shower Room	2.93m x 1.93m	Tiled floor throughout. Open shower with pressure pump shower, recess lights, w.h.b. with cabinets underneath. & w.c..
Large Sitting Room	5.93m x 5.52m (max)	Solid timber floors throughout. Featuring large bay window overlooking front gardens. Open fire with tile and timber surround. Electric, t.v. & telephone points.
Kitchen	6.83m x 6.01m (max)	Part timber floor, part tiled floor with large sliding door accessing the concreted patio areas to the rear and rear garden. Open arch to:
Sunroom	3.96m x 3.94 m	Timber flooring throughout. Feature windows with curved inserts and French door leading to south facing garden and Patio area.
Dining Room/Family Living Room	3.91m x 3.52 m	Solid timber flooring throughout with feature fireplace, t.v and electric points.
Utility/Back Porch	2.92m x 1.44 m + 2.27 x 1.41	L-shaped room, tiled throughout. Plumbed for washing machine, door to rear garden.
Home Office	3.63m x 2.79m	Timber flooring throughout and French door leading to rear garden.
Ground Floor Bedroom/Playroom	4.80m x 2.93m	Solid timber floors throughout. t.v. & electric points. Large window overlooking rear garden.
<i>Timber Stairs to First Floor:</i>		
Landing	7.92 m x 1.22m	Tongued and grooved flooring. Recess lights. Velux windows overhead offering plenty of light. Door to Hotpress with ample open shelf storage.
Master Bedroom	4.73m x 4.46m	Tongued and grooved timber flooring. Recess lights. Feature dormer window, built in wardrobes.





En-Suite	2.67m x 2.67m	Tiled flooring throughout, velux window, bath with pressure pump shower overhead, recess lights, his & hers w.h.b. with wall mounted cabinets & w.c.
Bathroom	3.36m x 2.68m	Tiled flooring throughout, bath, w.c. w.h.b. with wall mounted cabinets overhead and mirror. Enclosed corner shower with Triton T90 z.
Bedroom 2	4.71m x 3.4 m	Tongued and grooved floor. Built in wardrobes. Recess lighting throughout. Hatch to attic and dormer windows overlooking front gardens.
Bedroom 3	4.62m x 3.43m	Tongued and grooved flooring. Dormer window, recess lights and built in slide robes.
Bedroom 4	3.75m x 3.37m	Tongued and grooved floor, velux window overhead.
En-Suite	2.09m x 1.26m	Tiled flooring throughout with corner shower, Triton T90 SI, w.h.b. with mirror and light overhead, w.c.
Total Floor Area: c. 260 sq. m. /2,800 sq. ft.		





Outside

- Landscaped gardens with granite stone features.
- Site extends to c. 0.86 acre.
- Gym/Home Office 36 sq. m
- Poly Tunnel
- Large Shed 12m x 5.9m c. 71 sq. m with concrete insulated floor and Stanley stove.

Features

- Detached dormer built in 2003.
- 5/6 bedrooms, 4 bathrooms.
- Extends to c. 2,800 sq. ft.
- Vacant and ready to occupy.

VIEWING: Viewing is strictly by prior appointment and to arrange a suitable viewing time contact the sole selling agents, Kehoe & Assoc. at 053 9144393.

DIRECTIONS: Eircode Y21FX30

Services

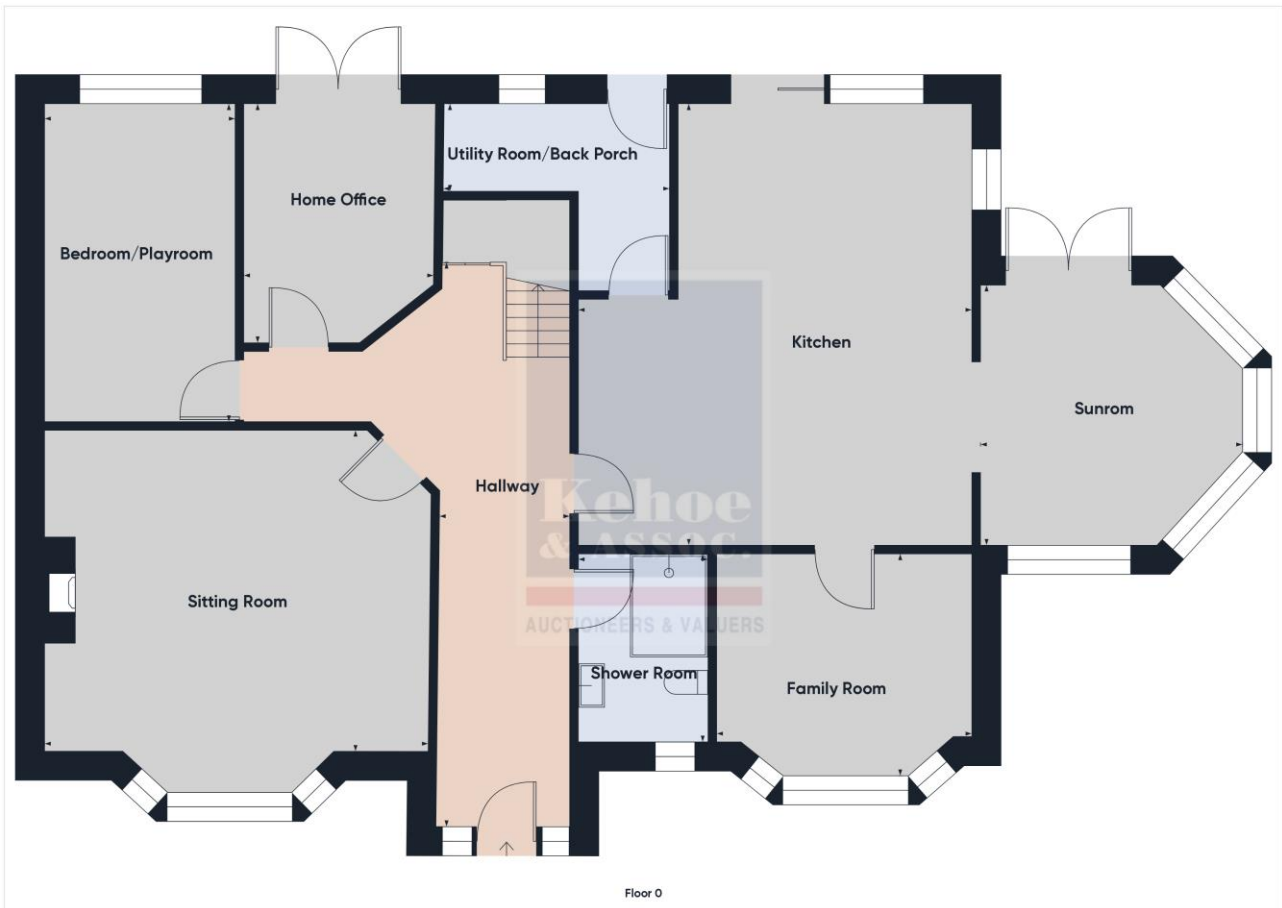
- Private water well.
- Treatment plant system.
- Wood pellet burner 50 kWh burner housed in a dedicated storage building with ample space for 3.5 ton of pellets.
- Fibre broadband available.

Building Energy Rating (BER):
B3

BER No.: 108433400

Energy Performance Indicator:
144.49 kWh/m²/yr







Building Energy Rating (BER): B3 BER No.: 108433400

Energy Performance Indicator: 144.49 kWh/m²/yr

VIEWING: Strictly by prior appointment with the sole selling agents only.
Contact Kehoe & Assoc. at 053 9144393 to arrange an appointment

Sales Agent

CATRIONA MURPHY

087 2427525

Email: catriona@kehoeproperty.com

Kehoe & Assoc.,
Commercial Quay,
Wexford
053 9144393

www.kehoeproperty.com

Email: sales@kehoeproperty.com



These particulars are issued for guidance purposes only and do not form part of any contract and are issued on the understanding that all negotiations regarding this property will be conducted through this firm. PRSA No. 002141

