

FOR SALE

AMV: €500,000 (For Sale in One Lot)

File No. d486.CWM



Bridgepoint, Enniscorthy Co. Wexford

- **Superb residential investment.**
- **Excellent town centre location**
- **Current rental income yield 8.28% (Rent review now due)**
- **Viewing strictly by prior appointment with the sole selling agents only. Kehoe & Assoc., 053 9144393**



**Kehoe
& ASSOC.**

Kehoe & Assoc. are delighted to present to the market this superb investment opportunity to acquire five apartments with tenants in situ (tenants unaffected) in one block at Bridgepoint, Enniscorthy. The apartment block is serviced by an elevator, there is a gated secured and refuse shelter.

The current rental income is €3,450 per month, €41,400 per annum with a gross rental yield of 8.28%. All tenancies are due a rent review with appropriate notice.

Nestled in the heart of Enniscorthy town centre, the five apartments in this block overlook the River Slaney and Enniscorthy's promenade. With every amenity at your doorstep, occupants relish the unparalleled convenience of this central location. Access into Bridgepoint is directly adjacent to the recently opened 'BTwenty7' café on Abbey Quay, with the apartment being adjacent to the Credit Union fronting Abbey Square.

There is a lift or two flights of stairs to:

Apt 7: this is a two-bedroom duplex apartment with one balcony. **Eircode Y21AW28**

Apt 8: this is a 2 bedroom with balcony. **Eircode Y21 K298**

Apt 9: this is a 2 bedroom with balcony. **Eircode Y21EK64**

Upstairs to

Apt. 10: this is a two-bedroom apartment all on one floor with two balconies extending to c. 64 sqm. **Eircode Y21 XP84**

Apt 11: this is a two-bedroom apartment all on one floor with two balconies extending to c.64 sq.m. **Eircode Y21 V820**

Viewing strictly by prior appointment with the sole selling agents only



Apt. 7 - 2 Bed Duplex Apartment With Balcony

ACCOMMODATION

Entrance Hall	3.62m x 1.42m	Lino flooring, wall-mounted electric heater.
Master Bedroom	4.75m x 2.68m	Lino flooring, window overlooking River Slaney views, wall-mounted electric heater, electrical points.
En-suite	1.71m x 1.38m	Enclosed tiled shower stall with glass doors, presume pump shower. Wall-mounted cabinet, w.h.b. with tiled splashback, mirror and lighting overhead, w.c.
Bedroom 2	4.75m x 2.66m (max)	Lino flooring, wall-mounted electric heater, window overlooking River Slaney views, electrical points.
Family Bathroom	3.49m x 1.73m	Lino flooring, bath with showerhead and part-wall tiling. Wall-mounted cabinet, w.h.b. with tiled splashback, mirror & lighting overhead, w.c.
Hotpress	1.57m x 1.02m	Electric immersion and ample storage open shelves.
Timber carpeted staircase to first floor		
Open Plan Kitchen/ Dining/Living Area	5.14m x 4.81m	Timber laminate flooring, open fireplace with timber mantle, electric wall-mounted heaters, sliding doors to balcony. Floor & eye level cabinets with counter space, single drainer stainless steel sink unit, tiled splashback, Zanussi double oven with 4-ring hob and extractor overhead, free-standing Belling fridge-freezer, Hotpoint washing machine, electrical points, further wall-mounted electric heater, t.v. points. Sliding doors to patio overlooking the River Slaney.

Total Floor Area: c. 56 sq.m. / 603 sq.ft.



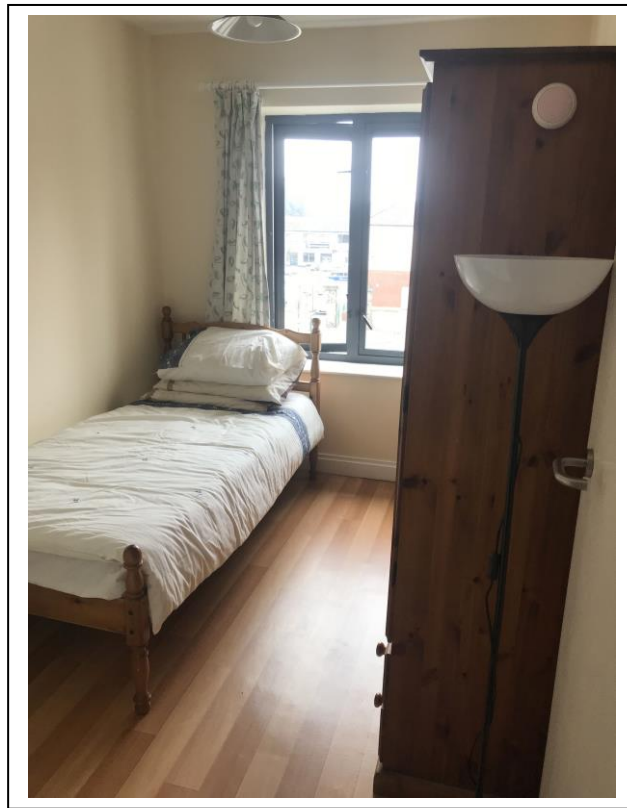
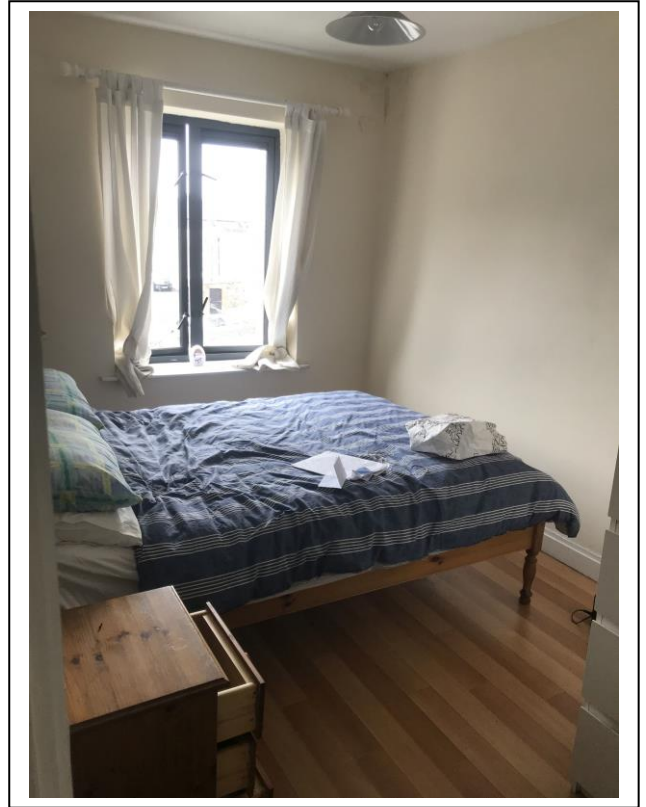
Apt. 8 - 2 Bed Apartment With Balcony

ACCOMMODATION

Entrance Hall	4.73m (max) x 3.12m (max)	Lino flooring, intercom, wall-mounted electric heaters. Hotpress with electric immersion and open shelves.
Open Plan Kitchen/ Dining/Living Area	8.45m x 5.42m (max)	Timber laminate flooring, open fireplace with timber mantle, wall-mounted electric heaters. Kitchen: break divide to timber laminate flooring, floor & eye level cabinets, Indesit under-counter washing machine, Normende electric oven & 4-ring electric hob, extractor fan, Hotpoint fridge-freezer, worktop space, single drainer stainless steel sink unit with tiled splashback surround. Windows overlooking Abbey Square and onto the River Slaney. Balcony door to kerbed balcony area overlooking the River Slaney.
Master Bedroom	4.15m x 2.42m	Laminate flooring, wall-mounted electric heaters, window overlooking Abbey Square. Door to:
En-suite	1.77m x 1.35m	Lino flooring, enclosed tiled shower stall with glass doors, presume pump shower. Wash hand basin with tiled splashback, mirror and lighting overhead, w.c.
Bedroom 2	3.07m x 2.27m	Lino flooring, wall-mounted electric heater, window overlooking Abbey Square.
Family Bathroom	1.77m x 1.68m	Lino flooring, bath with wall-mounted showerhead, part-wall tiling. Wash hand basin with tiled splashback, mirror & lighting overhead, w.c.

Total Floor Area: c. 68 sq.m. / 732 sq.ft.





Apt. 9 - 2 Bed Apartment With Balcony

ACCOMMODATION

Entrance Hall	4.36m (max) x 3.03m (max)	Laminate flooring, intercom, wall-mounted electric heater. Door to storage area & hotpress with open shelves.
Open Plan Kitchen/ Dining/Living Area	8.34m (max) x 5.18	Timber laminate flooring, open fireplace with timber mantle. Door to balcony area overlooking the Slaney River and Vinegar Hill views. Wall-mounted electric heaters. Kitchen: floor & eye level cabinets, single drainer stainless steel sink unit, counter space. Indesit washing machine, Normende electric oven and 4-ring electric hob, extractor fan. Belling free-standing fridge-freezer. Windows overlooking the River Slaney.
Master Bedroom	4.19m x 2.32m	Carpeted flooring, window overlooking River Slaney, Sunbeam wall-mounted electric heater.
En-suite	1.66m x 1.36m	Lino flooring, enclosed tiled shower stall with glass doors, presume pump shower. Wash hand basin with tiled splashback, mirror and lighting overhead, w.c.
Bedroom 2	3.04m x 2.35m	Lino flooring, wall-mounted electric heater, window overlooking River Slaney, electrical points.

Bathroom

Total Floor Area: c. 70 sq.m. / 753 sq.ft.





Apt. 10 - 2 Bed Apartment with Two Balconies

ACCOMMODATION

Entrance Hall	5.00m (max) x 2.52m (max)	Timber laminate flooring, intercom, electrical points. Hotpress with electric immersion and open shelving.
Internal Corridor	2.67m x 0.90m	Timber laminate flooring.
Open Plan Kitchen/ Dining/Living Area	7.98m (max) x 5.74m (max)	Timber laminate flooring, wall-mounted electrical heaters, Broadband access, electrical points, open fireplace with timber mantle. Door to balcony area overlooking the Abbey Square, Slaney River, Vinegar Hill and the Enniscorthy Bridge. Kitchen: floor & eye level cabinets, free-standing Normende electric oven and 4-ring electric hob, extractor fan, Hotpoint under-counter washing machine, free-standing Whirlpool fridge-freezer. Single drainer stainless steel sink unit with tiled splashback, ample counter space. Dual aspect in the dining area overlooking Abbey Square & riverside views.
Master Bedroom	3.28m x 2.34m	Lino flooring, upgraded ATC electric heaters, sliding patio door to balcony.
En-suite	2.05m x 1.17m	Lino flooring, enclosed tiled shower stall with glass doors, presume pump shower. Wash hand basin with tiled splashback, mirror and lighting overhead, w.c.
Bedroom 2	3.00m x 2.43m	Lino flooring, electric heater, sliding door second balcony.
Family Bathroom	1.72m x 1.65m	Tiled flooring, bath with wall-mounted showerhead, part-tiled surround. Wash hand basin with tiled splashback, mirror & light overhead, w.c.

Total Floor Area: c. 64 sq.m. / 689 sq.ft.





Apt. 11 - 2 Bed Apartment With Two Balconies

ACCOMMODATION

Internal Entrance	4.95m (max) x	Timber laminate flooring, intercom. Hotpress with electric immersion and open shelving.
Hall to Apt.	2.39m (max)	
Internal Corridor	2.71m x 0.89m	Timber laminate flooring.
Open Plan Kitchen/ Dining/Living Area	7.72m x 6.57m (max)	Timber laminate flooring, electrical storage heaters, open fireplace with timber mantle. Door to balcony area overlooking Enniscorthy Bridge, Abbey Square, River Slaney and direct views of Vinegar Hill. Kitchen: dual aspect windows overlooking second balcony off bedrooms and River Slaney views. floor & eye level cabinets, single drainer stainless steel sink unit with tiled splashback. Free-standing Normende electric oven and 4-ring electric hob, extractor fan. Free-standing fridge, and Whirlpool under-counter washing machine.
Master Bedroom	3.19m x 2.35m	Carpeted flooring, sliding patio door to balcony.
En-suite	2.03m x 1.19m	Lino flooring, enclosed tiled shower stall with glass doors, presume pump shower. Wash hand basin with tiled splashback, mirror and lighting overhead, w.c.
Bedroom 2	3.21m x 2.39m	Lino flooring, electrical points, sliding patio door to balcony.
Family Bathroom	1.68m x 1.67m	Timber laminate flooring, bath with wall-mounted showerhead, part-tiled surround bath. Wash hand basin with tiled splashback, mirror & light overhead, w.c.

Total Floor Area: c. 64 sq.m. / 689 sq.ft.





NOTE: There is parking with this property block.

SERVICE CHARGE: The service charge for 2022 was €9,907.70 which includes block insurance and communal area maintenance. Please note refuse is not included.

SERVICES

- Mains water
- Mains drainage
- ESB
- Fibre broadband available
- Storage heating

Apt. No.	BER	Ber No	Performance Indicator
Apt. 7	F	107946105	399.72
Apt. 8	F	107946139	394.08
Apt. 9	F	107946147	441.83
Apt. 10	E1	107946113	323.12
Apt. 11	E2	109946121	374.81

VIEWING: Strictly by prior appointment with the sole selling agents.
Contact Kehoe & Assoc. at 053 9144393 to arrange an appointment

Sales Agent

CATRIONA MURPHY

087 2427525

Email: catriona@kehoeproperty.com



Kehoe & Assoc.,
Commercial Quay,
Wexford

053 9144393

www.kehoeproperty.com

Email: sales@kehoeproperty.com



These particulars are issued for guidance purposes only and do not form part of any contract and are issued on the understanding that all negotiations regarding this property will be conducted through this firm. PRSA No. 002141