

TO LET

**RETAIL UNIT AT
30 SELSKAR STREET, WEXFORD**
Rent: €25,000 p.a. (Exclusive)

**Kehoe
& ASSOC.**

AUCTIONEERS & VALUERS

File No. b231.CM



- This excellent retail unit offers c. 213.68 sq.m. (2,300 sq.ft.) of ground floor presence on this busy thoroughfare in Wexford town.
- There is an additional c. 134.71 sq.m. (c. 1,450 sq.ft.) of retail space at first floor level.
- The property is situated in this most central location adjacent to Selskar Pharmacy and Greenacres with high volumes of passing pedestrian traffic.
- Situated at this important link between Dunnes Stores, Redmond Square and Shaws, Boots, The Bull Ring, etc.
- Extensive street frontage in this prime town centre location.
- Lease: Flexible lease terms available.
- Local authority Rates: The RV of the property is 82. Therefore the annual commercial rates are currently €5,548

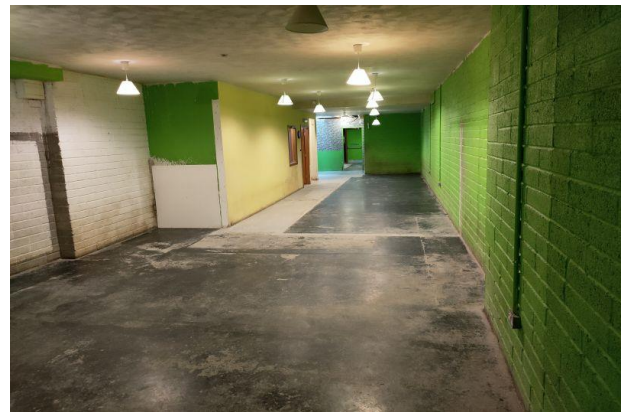


Kehoe & Assoc.

Commercial Quay, Wexford. Tel: 053 9144393

Email: info@kehoeproperty.com.

Website: www.kehoeproperty.com



VIEWING:

Strictly by prior appointment with the sole letting agents,
Kehoe & Assoc. 053 9144393
Email: sales@kehoeproperty.com

BER: B3

BER No. 800078917

PSRA No. 002141



These particulars are issued for guidance purposes only and do not form part of any contract and are issued on the understanding that all negotiations regarding this property will be conducted through this firm.