

FOR SALE

C.1.4 ACRE DEVELOPMENT SITE CROSSTOWN, WEXFORD

AMV: €500,000

**Kehoe
& ASSOC.**

AUCTIONEERS & VALUERS

File No. c446.CM

Development Site

- ❖ Prominent development site extending to c. 1.4 acres and directly fronting the Wexford to Castlebridge road.
- ❖ High profile position, walking distance to Wexford Town Centre, close to Ferrybank, The Riverbank Hotel, Wexford Swimming Pool, etc.
- ❖ This site is Zoned 'Neighbourhood Centre / Mixed Use'
- ❖ Highly accessible with dual road frontage. Presently serviced with foul & surface water connections. This site offers huge potential.
- ❖ Adjacent to successfully completed residential developments such as; Estuary View, Eden Wood & Crosstown Manor.
- ❖ Directions: In Wexford town proceed over the bridge heading towards Castlebridge. Pass Boland's Ford/Hyundai garage on the right hand side. Proceed for approximately 150m and the subject site is on the left (For Sale sign).
- ❖ Further details contact the sole selling agents, Kehoe & Assoc. at 053 9144393 or by email: sales@kehoeproperty.com

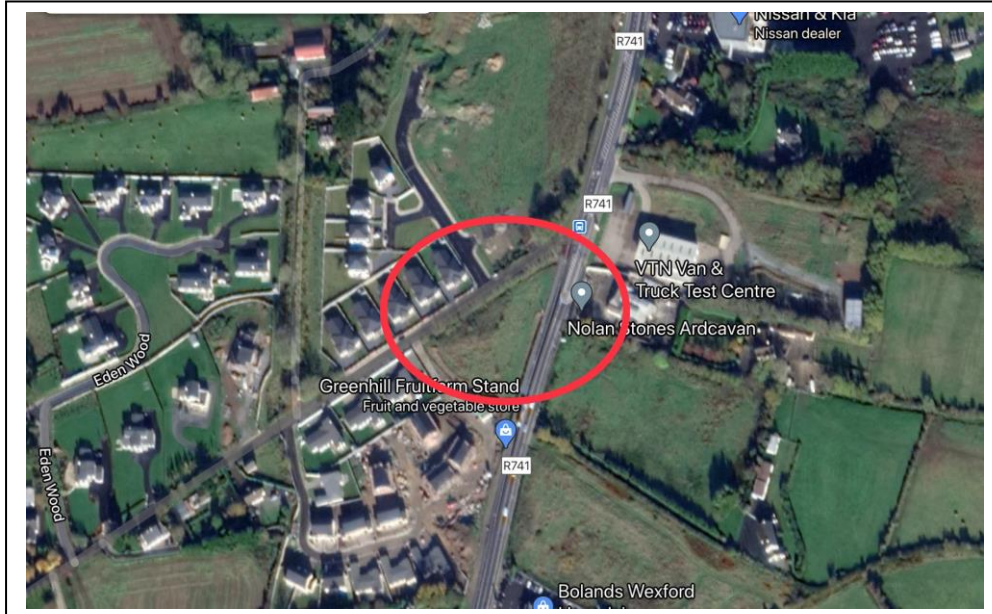
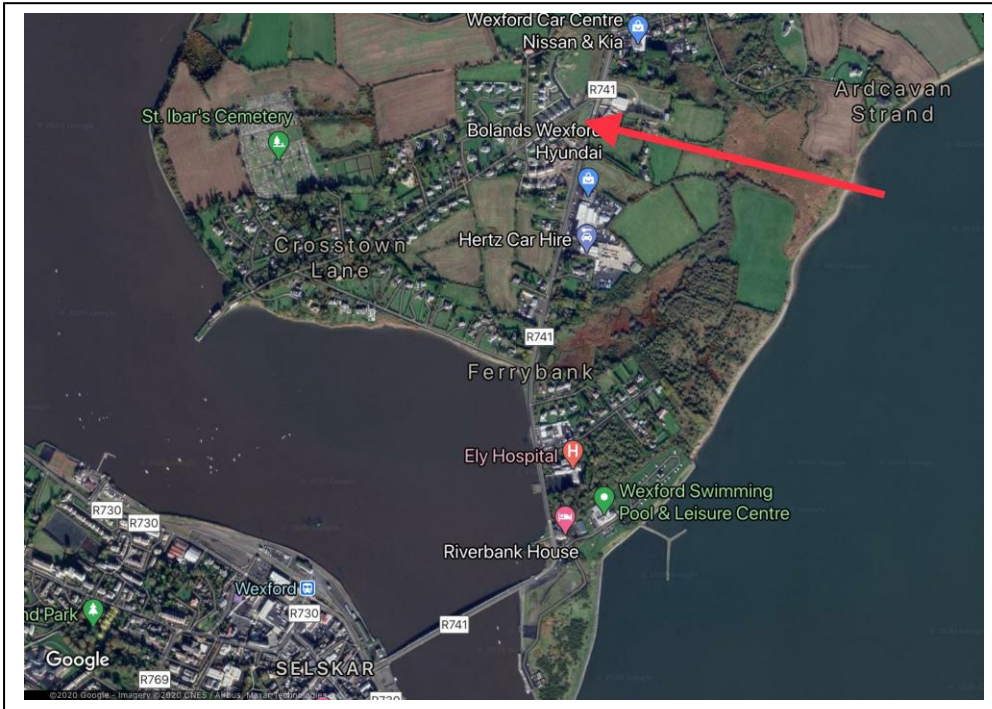


Kehoe & Assoc.

Commercial Quay, Wexford. Tel: 053 9144393

Email: info@kehoeproperty.com.

Website: www.kehoeproperty.com



CONTACT:
Kehoe & Assoc.
Commercial Quay,
Wexford
Tel: 053 9144393
Email: sales@kehoeproperty.com

PSRA No. 002141



These particulars are issued for guidance purposes only and do not form part of any contract and are issued on the understanding that all negotiations regarding this property will be conducted through this firm.