

FOR SALE

**NO. 30 SOUTH MAIN STREET,
WEXFORD**

AMV: €295,000

**Kehoe
& ASSOC.**

AUCTIONEERS & VALUERS

FILE NO. b244.CM



- ❖ This sale offers an ideal opportunity to acquire a substantial commercial property in a highly lettable location in Wexford Town Centre.
- ❖ Situated at South Main Street, close to the junction between South Main Street and Anne Street with adjoining occupiers including; Game Stop, Villa, Name IT, Trespass, Dealz, Penneys, Boots, Shoe Zone, etc.
- ❖ An excellent retail unit, ground floor extending to c. 70 sq.m. / 753 sq.ft, presented in good order with side access – very beneficial for deliveries.
- ❖ The entire building is for sale with 3 upper floors offering extensive office/storage accommodation with w.c.'s.
- ❖ This is a prime retailing pitch onto the busiest section of Wexford's Main Street.
- ❖ Viewing is strictly by prior appointment and to arrange a suitable viewing time, contact the sole selling agents, Kehoe & Assoc. 053 9144393.



the mark of
property
professionalism
worldwide

Kehoe & Assoc.

Commercial Quay, Wexford. Tel: 053 9144393

Email: info@kehoeproperty.com.

Website: www.kehoeproperty.com

LOCATION:

Situated in a prime retailing pitch, No. 30 South Main Street enjoys an excellent location. It is positioned adjacent to Keyzers Lane, with extensive frontage onto Wexford's Main Street and also a side access and delivers to Keyser's Lane with ease of access to the public car park to the rear. Adjoining occupiers include; Sports Direct, Dealz, Trespass, Fitzgeralds, Name IT, Game Stop, Penneys, Boots, etc. Wexford Town is a bustling commercial town with a fine mix of national, multi-national and indigenous retailers.

GENERAL DESCRIPTION

The subject property comprises an end of terrace building with retail at ground floor and three floors of overhead accommodation. The retail unit extends to c. 70 sq.m. / 753 sq.ft. It is presented in very good order with large display windows, window shutters, suspended ceiling and multiple power points. Accommodation is as follows:

ACCOMMODATION

Ground Floor

Retail Unit c. 70 sq.m. (c. 753 sq.ft.)

First Floor

Store 1 3.21m x 4.66m

Store 2 4.27m x 5.96m

Kitchen

Floor Area: c. 45 sqm. (484 sq.ft.)

Second Floor

Office 1 4.67m x 3.12m

Office 2 4.48m x 2.9m

Staff W.C & W.H.B.

Floor Area: c. 30 sqm. (323 sq.ft.)

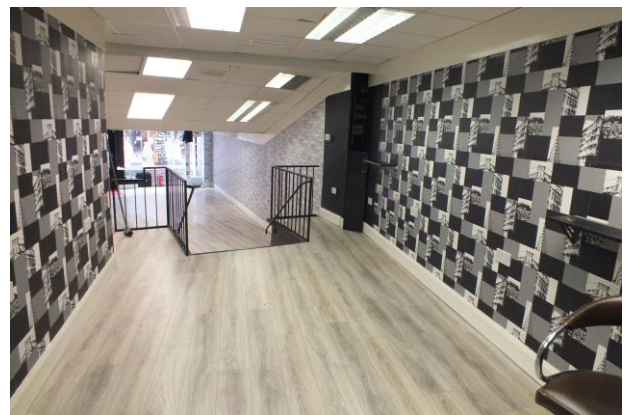
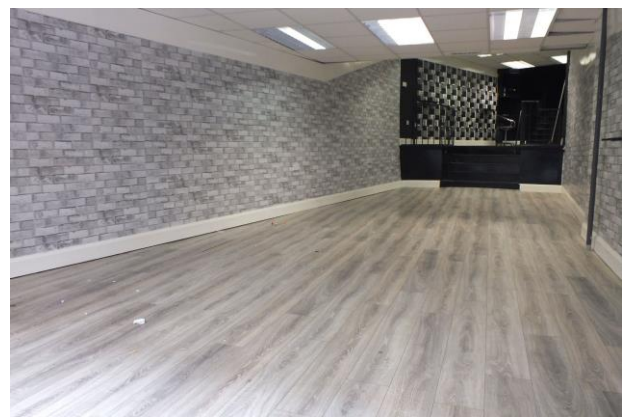
Third floor

Store 3 6.0m x 2.7m

Store 4 4m (ave) x 3.29m

Floor Area: c. 30 sqm. (323 sq.ft.)

Total Floor Area: c. 175 sq.m. (c. 1,883 sq.ft.)



LOCAL AUTHORITY RATES

We are given to understand that the RV of the property is €23.93, with the Rate in the Euro (ARV) for Wexford in 2018 is €73.67. This gives a current annual rates figure of €2,058.

BER

Building Energy Rating (BER): C1

BER No. 800290199

Performance Indicator: 412.62 Wh/m2/yr

VIEWING

Strictly by prior appointment with the sole selling agents, please contact, Kehoe & Assoc. at 053 9144393 or sales@kehoeproperty.com

DIRECTIONS

The property is situated on South Main Street, directly adjoining Fehily's Pharmacy and almost Penneys (For Sale Boards)

SPORTS DIRECT	DEALZ	TRESPASS	FITZGERALDS	SUBJECT PROPERTY	JD SPORTS	NAME IT	GAME STOP
------------------	-------	----------	-------------	---------------------	-----------	---------	-----------

SOUTH MAIN STREET, WEXFORD

COSTA COFFEE	MOUNTAIN WAREHOUSE	HORES	PENNEYS	BOOTS	SHOE ZONE
-----------------	-----------------------	-------	---------	-------	-----------



These particulars are issued for guidance purposes only and do not form part of any contract and are issued on the understanding that all negotiations regarding this property will be conducted through this firm.